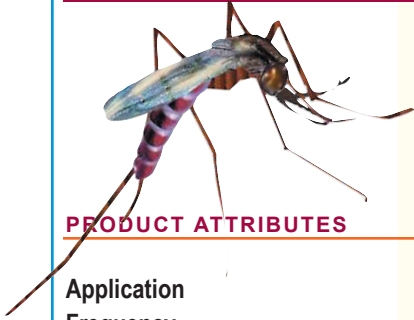


# COMPARE MICROBE-LIFT/BTI FORMULATIONS TO THE COMPETITION



## PRODUCT ATTRIBUTES

	<b>CHEMICAL (S)-Methoprene Pre-Strike</b>	<b>BIOLOGICAL<sup>®</sup> Microbe-Lift<sup>®</sup> Liquid Mosquito Control</b>	<b>BIOLOGICAL Mosquito Dunks</b>
<b>Application Frequency</b>	Every 3 weeks	7-14 days depending on application site	Monthly
<b>Larvae Affected</b>	Older larvae	<b>All stages except prepupae</b>	All stages except prepupae
<b>Effect on Food Chain</b>	No adverse effect	No adverse effect	No adverse effect
<b>Application Rate</b>	1 teaspoon treats 211 sq. ft. (total water column)	<b>1 teaspoon treats 540 sq. ft. (total water column)</b>	1 dunk treats 100 sq. ft. (surface area only)
<b>Product Activity</b>	Works by contact and ingestion	Works by ingestion	Works by ingestion
<b>Application/Dispersal</b>	Disperses evenly in water	Disperses evenly in water	Disperses slowly in water
<b>Fish Toxicity</b>	Yes, if not used according to label	<b>No</b>	No
<b>Toxicity Against Non-Target Invertebrates</b>	Yes	<b>No</b>	No
<b>Potential for Resistance Development in the Target Mosquito Population</b>	<b>Yes**</b>	<b>No</b>	No
<b>Adversely Affects Pond Aesthetics</b>	No	No	Yes
<b>Adversely Affects Birdbaths and Fountain Aesthetics</b>	Yes	<b>No</b>	Yes
<b>Leaves Organic and Inorganic Residues</b>	No	No	Yes (cork and calcium sulfate)
<b>Safety</b>	<b>Nearly as safe as BTI products</b>	<b>Safer than Methoprene</b>	Safer than Methoprene

**\*\*It is essentially impossible to see BTI resistant populations of mosquitoes, while Methoprene resistant populations of insects already exist!**



**Ecological Laboratories INC.**